

# TECHINCAL DETAILS

OF

## *digi*WASH II Nx™

### 1. INTRODUCTION

The Test is intended to determine Color Fastness of Textile material irrespective of their Composition (Cotton, Linen, Silk, Man-made Fibers, Wool) and their Form (Fibre, Yarn or Fabric) to WASHING & DRYCLEANING.

### 2. EQUIPMENT

Paramount's *digi*WASH I Nx™ main body is completely made of mild steel & top is made of stainless steel with digital control panel. The specially designed stainless steel rotating drum in the water bath can accommodate four beakers of 550ml & four beakers of 1200ml made of stainless steel to meet the specification of both **ISO & American standards**. Two heaters provided for heating the water bath at faster rate. Ergonomically designed digital control panel with time setting & temperature control system.

### 3. SALIENT FEATURES

- Latest model to check colorfastness to washing & dry cleaning.
- Latest Ergonomic design with customer friendly control panel.
- Temperature can be raised up to 98° C with digital Temperature controller.
- Inching facility for loading and unloading the beakers.
- Digital Timer with automatic shut down & audible warning.
- Four 1200 ml and Four 550m Beakers & 40 rpm of the rotating drum strictly meet both ISO & AATCC standards.
- Robust steel body gives long life & durability.
- special silicon gaskets for the beakers having very long life.
- Supplied with complete accessories including standard detergent and adjacent fabrics.
- Supplied with calibration & inspection certificates.



Corporate Member



Life Member



Member : Bureau of  
Indian Standards

#### 4. DETAILS OF THE MAIN UNIT OF *digiWASH II*

*Nx*<sup>™</sup>



1. Side Covers.
2. Head-up Control Panel Unit.
3. Door Handle.
4. Door.
5. Door Supporter.
6. Over flow Nozzle. (On this valve the Supplied Plastic Tubing to be Fitted.)
7. Drain /Inlet Valve (On this valve the Supplied Plastic Tubing to be Fitted).



Corporate Member



Life Member



Member : Bureau of  
Indian Standards

## 5. DETAILS OF THE ACCESSORIES SUPPLIED WITH *digiWASH II Nx*™



Main Unit



S.S. Beakers / Pots for Testing (As per AATCC Std. – 1200 ± 100 ml.)  
04 Nos.



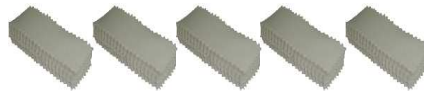
S.S. Beakers / Pots for Testing (As per ISO Std. – 550 ± 50 ml.)  
04 Nos.



Gaskets (Fitted in the Beakers) (As per AATCC Beakers) – 04 Nos.



Gaskets (Fitted in the Beakers) (As per ISO Beakers) – 04 Nos.



Standard Adjacent Fabrics (Pack of 100) – 05 Nos.



Stainless Steel Balls (Pack of 100) – 02 Pkts



Filter Unit (For taking out the S.S. Balls from the Beakers after testing.)



Sodium Oleate (Pack of 30 Gms.) (For Initial Testing)



Plastic Beaker 500ml (For Soap Solution)



Square. Rods – 02 Nos. (For Fixing AATCC Beakers)



Nuts – 02 Nos. (For AATCC Beaker Fitting)



Nut Opener (For AATCC Beaker Fitting)



Fine Scissors (For Preparing Samples)



Sewing Thread Knit (To Prepare Sample)



S. S Scale (12 Inch) (For Marking, to Prepare Sample)



Plastic Tubing for Overflow & Drain Outlets



Stainless Steel Clamps – 02 Nos. (For fixing Plastic Tubing)



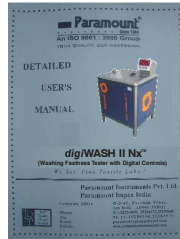
Corporate Member



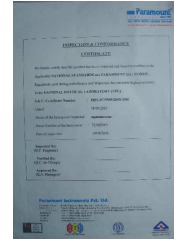
Life Member



Member : Bureau of Indian Standards



This User's Manual



Calibration & Inspection Certificates

***digiWASH II Nx***<sup>TM</sup> is Supplied Complete with below Accessories:

- |  |   |          |
|--|---|----------|
| 1) Main Unit   | : | 01 No.   |
| 2) Crocking Cloths (As per AATCC) (Pack of 100 Nos.) | : | 10 Pkts. |
| 3) S.S Spring Clips (For mounting Crocking Cloths)   | : | 02 Nos.  |
| 4) Blotting papers (Pack of 50 Nos.)                 | : | 05 Pkts. |
| 5) Specimen Holder                                   | : | 01 No.   |
| 6) Dust Cover  | : | 01 No.   |
| 7) This User's Manual                                | : | 01 No.   |
| 8) Calibration Certificate (Traceable to NPL)        | : | 01 No.   |
| 9) Inspection & Conformance Certificate              | : | 01 No.   |

## 6. TECHNICAL DETAILS OF *digiWASH II Nx*<sup>TM</sup>

Diameter of the Rubbing Finger	:	16 ±0.2 mm
Force on the Finger	:	9 N±10%
Size of Crocking Cloth	:	(5 x 5) Cms.
Length of the Traverse of the Finger	:	103 ±2 mm
Counter (Re-settable)	:	0 – 9999, (Least Count : 1)
Size of Test Specimen	:	25 x 5 Cm
Construction	:	Cold-rolled steel
Finish	:	Metallic Blue & Black
Overall Dimension of the Unit	:	600 (L) x 188 (W) x 200 (H) mm 24" (L) x 7.5" (W) x 8" (H) Inch
Net Weight of the Unit	:	4 Kg. (8.8 lbs)



Corporate Member



Life Member



Member : Bureau of Indian Standards

## 7. RELATED STANDARDS

AATCC 8 – 2001

## REFERENCE STANDARD

ISO 105

BS 1006

BS EN 20105

MARKS & SPENCER C8

***NOTE : With our constant endeavour to improve & excel, we reserve the right to alter the specification or modify the appearance without notice.***



Corporate Member



Life Member



Member : Bureau of  
Indian Standards