

# TECHINCAL DETAILS OF

## *dig*WASH I Nx<sup>™</sup> (Washing Fastness Tester As Per ISO/European Standards)

### 1. INTRODUCTION

The Test is intended to determine Color Fastness of Textile material irrespective of their Composition (Cotton, Linen, Silk, Man-made Fibers, Wool) and their Form (Fibre, Yarn or Fabric) to WASHING. Note: Paramount's *dig*WASH I Nx<sup>™</sup> can also be used for checking the Color Fastness against color Fastness against Dry cleaning.

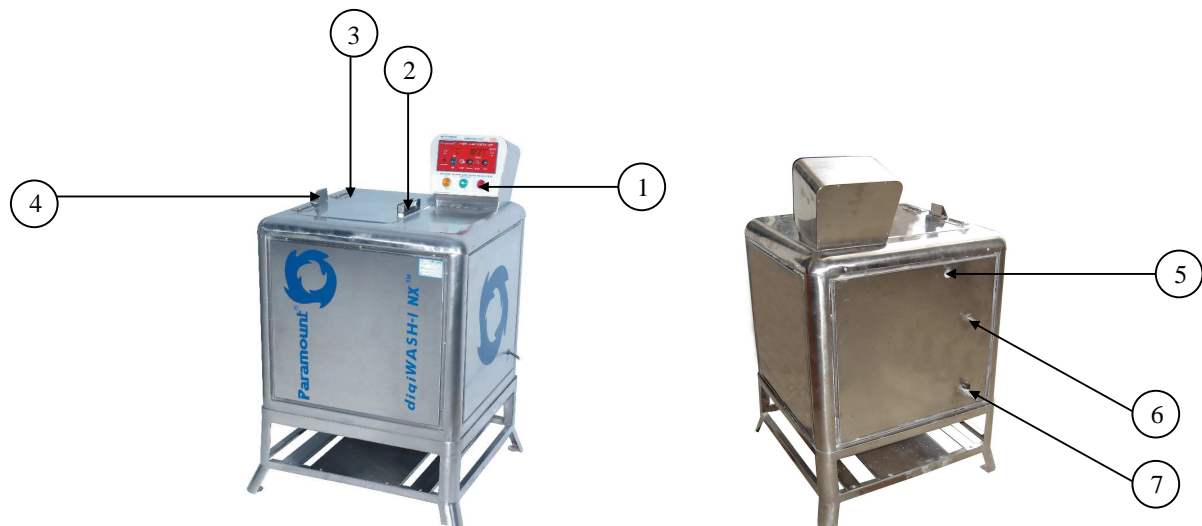
### 2. EQUIPMENT

Paramount's *dig*WASH I Nx<sup>™</sup> is completely made of stainless steel with digital control panel. The rotating drum in the water bath can accommodate eight beakers of 550ml to meet the specification of international standards. Two heaters are provided for heating the water bath faster. A Special designed SS stand to hold the equipment is supplied as normal accessory. Digital control panel with time setting & temperature control system.

### 3. SALIENT FEATURES

- Latest model to check colorfastness to washing & dry cleaning.
- Latest Ergonomic design with customer friendly control panel.
- Temperature can be raised up to 98° C with digital Temperature controller.
- Robust completely stainless steel body gives long life operations & durability
- Inching facility for loading and unloading of the beakers.
- Digital Timer with automatic shut down & audible warning.
- Eight 550 ml Beakers & 40 rpm of the rotating drum strictly meets the International standards.
- Special silicon gaskets for the beakers having very long life.
- Supplied with complete accessories including standard detergent and adjacent fabrics.
- Supplied with calibration & inspection certificates.

#### 4. DETAILS OF THE MAIN UNIT OF *digiWASH I Nx*™



1. Head-up Control Panel Unit.
2. Door Handle.
3. Door.
4. Door Supporter.
5. Steam Out Flow Valve.
6. Over flow Nozzle. (On this valve the Supplied Plastic Tubing to be Fitted.)
7. Drain /Inlet Valve (On this valve the Supplied Plastic Tubing to be Fitted).

**5. DETAILS OF THE ACCESSORIES SUPPLIED WITH *digiWASH I Nx*™**



Main Unit with S.S Stand



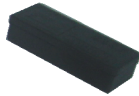
S.S. Beakers / Pots for Testing  
08 Nos.



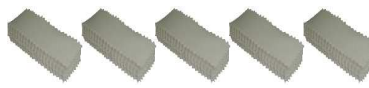
Gaskets 08 Nos.  
(Fitted in the Beakers)



Stainless Steel Balls  
(Pack of 100)



Sewing Thread Kit  
(To Prepare Sample)



Standard Adjacent Fabrics  
(Pack of 100) – 05 Nos.



Fine Scissors  
(For Preparing Samples)



Sodium Oleate (Pack of 30 Gms.)  
(For Initial Testing)



Measuring Beaker 500ml  
(For Soap Solution)



Filter Unit (For taking out the  
S.S. Balls from the Beakers after  
testing.)



Plastic Tubing (1.5Mtr. Each) For  
Outlet & Overflow valves 02 Nos.



S. S Scale (12 Inch)  
(For Marking, to Prepare Sample)



Stainless Steel Clamps – 02 Nos.  
(For fixing Plastic Tubing)



This User's Manual



Calibration & Inspection Conformance Certificate

***digiWASH I Nx™* is Supplied Complete with below Accessories:**

1. Main Unit	:	01 No
2. Stainless Steel Stand of the Main Unit	:	01 No.
3. S.S Beakers / Pots for testing	:	08 Nos.
4. Gaskets – (Fitted in the Beakers)	:	08 Nos.
5. Stainless Steel Balls (Pack of 100)	:	01 No.
6. Sodium Oleate (pack of 30gm) – For initial testing	:	01 Pack
7. Measuring Plastic Beaker (500 ml.)	:	01 No.
8. Standard Adjacent Fabrics – 10 x 4 Cms. (Pack of 100)	:	05 Nos.
9. Filter Unit – For taking out the S.S.Balls from the Beaker after testing	:	01 No.
10. Sewing Thread Kit	:	01 No.
11. Fine Scissors – For Preparing Samples	:	01 No.
12. Plasting Tubing (1½ Meters Each) - For Outlet & Overflow valves	:	02 Nos.
13. Stainless Steel Clamp – For Fixing Plastic Tubing	:	02 Nos.
14. Stainless Steel Scale for Marking (30 Cms.)	:	01 No.
15. This User's Manual	:	01 No.
16. Calibration Certificate (Traceable to NPL)	:	01 No.
17. Inspection & Conformance Certificate	:	01 No.

**6. TECHNICAL DETAILS OF *digiWASH I Nx™***

Inner dimensions of the Main Bath	:	295 X 410 X 450 mm
Capacity (in liters) of Main Bath	:	22 Liters (Approx.)
Number of Beakers (Test Vessels)	:	08 Nos. Leak-proof Beakers with Gaskets
Standard Seal for Beakers	:	08 Nos. Special Neoprene Gaskets
Volume of each Beakers As Per ISO	:	550±50 ml.
Distance from Shaft	:	45±10 mm



Corporate Member



Life Member



Member : Bureau of Indian Standards

Speed of Rotation	: 40±2 rpm
Temperature Controller	: PT-100 Type (0-99.9°C) L/C – 0.1°C
Temperature Regulation	: ±2.0°C (As Per I.S.O.)
Timer (Digital)	: 0-99 Minutes, L/C : 1 Minute
Motor	: 1/8 HP, Single Phase, Geared Motor 220 ~ 230 Volts AC, 50 Hz.
Overall Dimensions of the unit (Without S.S. Stand)	: 710 (L) x 570 (W) x 785 (H) mm 28” (L) x 22.5” (W) x 31” (H) Inch.
Overall Dimensions of the unit (With S.S. Stand)	: 720 (L) x 590 (W) x 1140 (H) mm 28.5” (L) x 23” (W) x 41” (H) Inch.
Net Weight of the Unit (Without S.S. Stand)	: 63.5 Kg (139.7 lbs)
Net Weight of the Unit (With S.S. Stand)	: 81.5 Kg (179.3 lbs)

## 7. RELATED STANDARD

ISO 105

BS 1006:1990

BS EN 20105

**NOTE : With our constant endeavour to improve & excel, we reserve the right to alter the specification or modify the appearance without notice.**



Corporate Member



Life Member



Member : Bureau of Indian Standards